



Deep Purple Extreme Rechargeable Flashlight featuring High-Flux Nichia LED Technology

405nm



APPLICATIONS:

- Fluorescent coatings inspection (OAP)
Complies with ASTM E2501 standards
- Filtration system contaminant inspection
- Laboratory & scientific needs, whenever
cordless high-power near-UV is required



FEATURES:

- Reliable solid-state near-UV emission from six Nichia LEDs.
- *New!* 405nm peak wavelength, using six 1400mW emitters.
- High / Low / White modes easily selectable with thumb switch.
- White mode (center LED only) allows navigation in dark areas.
- 5 to 6 hours continuous runtime on High mode, 13 hours Low.
- Overall runtimes will be longer when unit is used intermittently.
- LED mode indicator is readable even in total darkness.
- Side charging port on head of flashlight (batteries can stay in).
- Operates from four protected type 18650 lithium-ion batteries.
- Premium-quality rechargeable batteries included.
- Smart universal-voltage battery charger included.
- International power plug adapter for use in over 150 countries.
- Approximate size is 6.0" long x 2.3" wide.
- LED rated lifetime 10,000 hours or more.
- User replaceable batteries rated 500 charge cycles or more.
- Frosted glass front diffuser element for smooth beam image.
- Beam has no rings or shadows or edges, reduces eye strain.
- Adjustable lanyard, spare o-ring, and marking pens included.

MODEL NUMBER

XE-405X

This fluorescent inspection flashlight was designed and manufactured by Xenopus Electronix of Austin, Texas specifically for Flashlights Unlimited.

DESCRIPTION

405nm Near-UV flashlight with six high-flux Nichia emitters plus bright white mode for navigation. Kit includes rechargeable batteries, universal charger, rugged plastic carrying case, two pairs of yellow wrap-around safety glasses with storage pouches & neck cords, two fluorescent yellow marker pens.

Flashlights Unlimited

<https://flashlightsunlimited.com>

info@flashlightsunlimited.com

Telephone: +1 912-999-6378



Deep Purple Extreme Rechargeable Flashlight featuring High-Flux Nichia LED Technology



INSTRUCTIONS FOR USE:

- Insert two or four cells, positive end up, into battery compartment, then carefully screw head of flashlight onto battery compartment.
- Flashlight will operate on either two or four cells, for convenience.
- *All battery slots in the battery chamber of the flashlight are identical. Batteries are in parallel, and all are inserted in the same orientation.*
- Carefully observe correct battery polarity — all batteries must be loaded with positive (button end) toward head of flashlight (as shown in picture).
- Lamps will light briefly after battery installation to indicate correct connection.
- Fully charge batteries in flashlight before first use, with included charger only.
- Kit includes a 100-240VAC smart charger, plus an international plug adapter.
- Charger plugs into side charging port on body, under a protective rubber flap.
- Red LED on charger indicates battery charging is in progress.
- Blue or green LED on charger indicates charging is complete.
- Cycle through modes White / Low-Violet / High-Violet with pushbutton switch.
- Flashlight will become very warm to the touch when operated in High-Violet mode for extended intervals. This is normal and not cause for concern, but alert users that the flashlight becomes very warm when used in High mode.
- If flashlight powers off and/or LED indicator shows an up/down pattern, the batteries need to be recharged. Let the flashlight cool down, then plug it in.
- Yellow viewing goggles should be worn for enhanced eye safety, and will also improve the contrast of fluorescent inspection tasks.



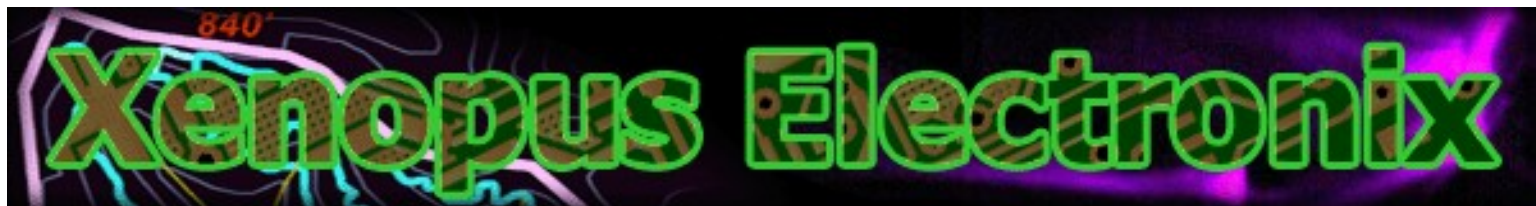
MODEL NUMBER XE-405X

This fluorescent inspection flashlight was designed and manufactured by Xenopus Electronix of Austin, Texas specifically for Flashlights Unlimited.

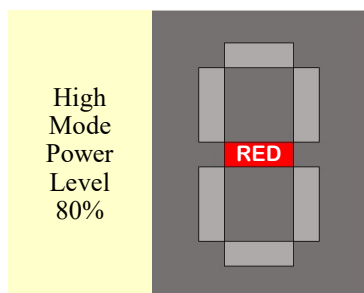
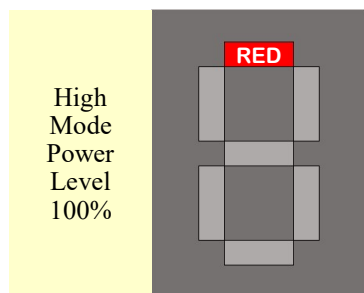
DESCRIPTION

405nm Near-UV flashlight with six high-flux Nichia emitters plus bright white mode for navigation. Kit includes rechargeable batteries, universal charger, rugged plastic carrying case, two pairs of yellow wrap-around safety glasses with storage pouches & neck cords, two fluorescent yellow marker pens.

Flashlights Unlimited
<https://flashlightsunlimited.com>
info@flashlightsunlimited.com
 Telephone: +1 912-999-6378



Deep Purple Extreme Rechargeable Flashlight featuring High-Flux Nichia LED Technology



SPECIAL POWER CONTROL FEATURE:

- This flashlight is shipped with its High mode operating power set to 80% of the design maximum power for the 405nm LEDs. This improves the operating time per charge, and reduces heating of the body when the flashlight is in High mode. This setting does not affect the performance of Low or White operating modes.
- The flashlight can be adjusted to operate at 100% of the design maximum power for the 405nm LEDs when in High mode. Once this setting has been changed, it will be remembered for all future usage, unless or until you change it back again.
- To switch the High model power level from 80% to 100% (or back from 100% to 80%), begin with the flashlight turned off. Next press and hold the switch button for eight to ten seconds. The mode indicator will flash the upper segment twice to confirm that the power level has been set to 100% (or it will flash the middle segment twice to confirm that the power level has been reverted back to 80%).
- 80% power level Pros in High Mode: longer run time per charge, reduced body temperature. 80% power level Cons in High mode: reduced beam brightness.
- 100% power level Pros in High Mode: increased beam brightness. 100% power level Cons in High mode: shorter run time per charge, higher body temperature.
- When operating in High mode at the 100% power level over extended intervals, the flashlight will become extremely warm to the touch. Although this is not dangerous, it may startle unsuspecting personnel who touch the flashlight. Explain the high operating temperature to anyone who may touch or grasp the flashlight.

FLASHLIGHT SAFETY CONSIDERATIONS:

- Do not submerge in water — flashlight is splash-resistant, but not fully waterproof.
- Do not dismantle the flashlight head assembly.
- Not a toy — keep well out of reach of children!
- Lithium ion batteries are fully recyclable, and must be recycled in accordance with your local municipal and/or state guidelines.
- The front glass lens can shatter if dropped, please use caution to avoid breakage.
- Lithium batteries can become dangerous if handled or operated improperly. Recharge only in approved chargers. Never expose lithium batteries to heat or flame, water or liquids. Do not mix batteries of different brands or models. See additional safety instructions provided on the two plastic battery carrier boxes.



CAUTION: Device emits intense violet light.
Avoid direct or strongly reflected exposure.
Do not look directly into the beam, and do not aim at people or animals or vehicles. Use appropriate protective eyewear.

Flashlights Unlimited
<https://flashlightsunlimited.com>
info@flashlightsunlimited.com
Telephone: +1 912-999-6378

MODEL NUMBER

XE-405X

This fluorescent inspection flashlight was designed and manufactured by Xenopus Electronix of Austin, Texas specifically for Flashlights Unlimited.

DESCRIPTION

405nm Near-UV flashlight with six high-flux Nichia emitters plus bright white mode for navigation. Kit includes rechargeable batteries, universal charger, rugged plastic carrying case, two pairs of yellow wrap-around safety glasses with storage pouches & neck cords, two fluorescent yellow marker pens.



Deep Purple Extreme Rechargeable Flashlight featuring High-Flux Nichia LED Technology



KIT INCLUDES:

- Deep Purple Extreme multimode rechargeable flashlight
- Two pair of viewing glasses (yellow, contrast-enhancing, **ANSI Z87.1+** safety)
- Universal smart charger (100-240VAC, USA plug plus international adapter)
- Four Tenergy 2600mAh fully-protected lithium-ion rechargeable cells
- Adjustable lanyard, spare o-ring, two fluorescent yellow marker pens
- All in a custom-foam-lined carry case for easy portability!

**Assembled in USA
One Year Warranty**



Flashlights Unlimited
<https://flashlightsunlimited.com>
info@flashlightsunlimited.com
 Telephone: +1 912-999-6378

MODEL NUMBER XE-405X

This fluorescent inspection flashlight was designed and manufactured by Xenopus Electronix of Austin, Texas specifically for Flashlights Unlimited.

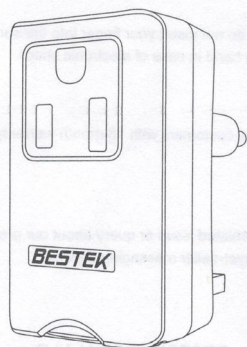
DESCRIPTION

405nm Near-UV flashlight with six high-flux Nichia emitters plus bright white mode for navigation. Kit includes rechargeable batteries, universal charger, rugged plastic carrying case, two pairs of yellow wrap-around safety glasses with storage pouches & neck cords, two fluorescent yellow marker pens.

BESTEK

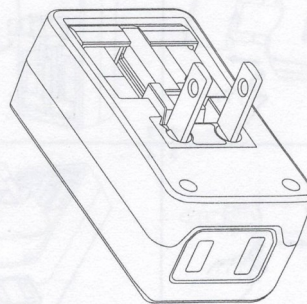
Travel Adapter

MODEL: MRJ2604



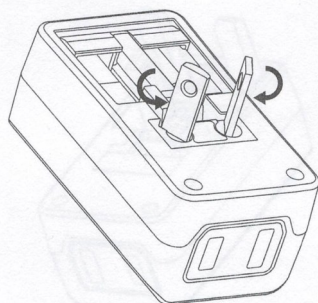
Thanks sincerely for shopping with BESTEK.
Please read the manual carefully before using it and follow the instruction strictly.

Operation diagram:



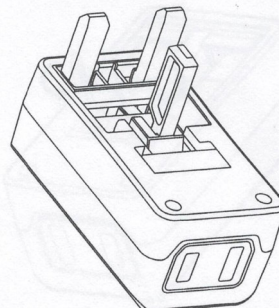
Type A - USA, Japan, China

Other Countries include: American Samoa / Antigua and Barbuda / Aruba / the Bahamas / Barbados / Belize / Bermuda / Brazil / Canada / the Cayman Islands / Colombia / Costa Rica / Cuba / Ecuador / El Salvador / Guam / Guatemala / Haiti / Honduras / Jamaica / Japan / Liberia / Mexico / Micronesia / Montserrat / Nicaragua / Okinawa / Panama / Peru / the Philippines / Puerto Rico / Saudi Arabia / Tahiti / Taiwan (China) / Thailand / Trinidad and Tobago / Venezuela / the Virgin Islands, etc.



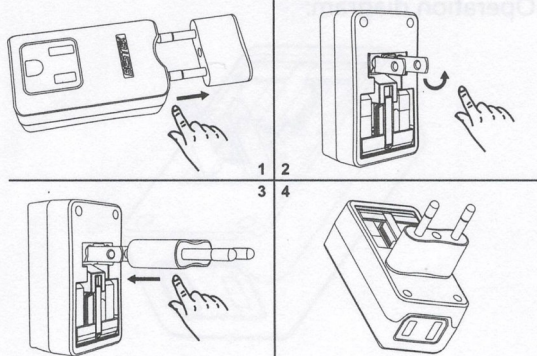
Type I - Australia, China

Other Countries include: Argentina / Australia / China / Fiji / New Zealand / Papua New Guinea / Tokelau (the Union Islands) / American Samoa / Argentina / Cook Islands / Kiribati / Nauru / Saint Vincent and the Grenadines / Samoa / Solomon Islands / Tajikistan / Timor-Leste / Tonga / Tuvalu / Uzbekistan / Vanuatu / Uruguay, etc.



Type G - UK, Ireland

Other Countries include: Bahrain / Belize / Botswana / Brunei / Cyprus / Dominica / England / Ghana / Gibraltar / Grenada / Hong Kong (China) / Iraq / Ireland / Kenya / Macau (China) / Malta / Malaysia / Nigeria / Northern Ireland / Oman / Qatar / Saint Lucia / Saint Vincent / Saudi Arabia / Scotland / Singapore / Sri Lanka / Tanzania / Uganda / the United Arab Emirates / Wales / Yemen / Zimbabwe, etc.



Type C - German, France, Most Europe, This socket also works with plug E, F, N

Other Countries include: Albania / Switzerland / Austria / Belgium / Bosnia-Herzegovina / Bulgaria / Croatia / Cyprus / the Czech Republic / Denmark / Estonia / France / Finland / Greece / Hungary / Iceland / India / Latvia / Lithuania / Luxembourg / Macedonia / Montenegro / the Netherlands / Norway / Poland / Portugal / Romania / Serbia / Spain / Slovakia / Slovenia / Sweden / Turkey / Ukraine, etc.

Specifications:

Rated: 100-250V~ 10A Max

Warning:

- ⚠ Please make sure that the total wattage is less than rated wattage when using the product.
- ⚠ When connected, do not insert your finger into the sockets or touch the product with a wet hand in case of electronic shock.

Warranty:

Our company provides customers with 18-month warranty from the date of purchase.

Contact Us:

If there is any quality-related issue or query about our product, please contact us by phone at +1-909-816-0181 or by email support@bestekdirect.com.

BESTEK GLOBAL LLC
1290 E ELM ST, #A-8, ONTARIO,
CA 91761
COMPANY: BESTEK
MADE IN CHINA

